



Government of India
Ministry of Earth Sciences
India Meteorological Department



Press Release

Date: 07th August, 2025

Time of Issue: 1330 hours IST

Subject: i) Heavy to very heavy rainfall likely to continue over Northeast & adjoining East India during next 7 days with extremely heavy rainfall (≥ 21 cm) very likely at isolated places over Arunachal Pradesh on 08th August.
ii) A fresh spell of heavy to very heavy rainfall likely over Himachal Pradesh, Uttarakhand, Uttar Pradesh from 10th August, 2025.
iii) Subdued rainfall activities likely over Central India and Rajasthan during next 4-5 days.

Realised weather during past 24 hours till 0830 hours IST of today, the 07th August, 2025:

- ❖ **Heavy to very heavy rainfall with extremely heavy falls (≥ 21 cm)** has been recorded at isolated places over Tripura.
- ❖ **Heavy to very heavy rainfall (7-20 cm)** has been recorded at isolated places over Assam, Tamil Nadu, Himachal Pradesh; **Heavy rainfall (7-11 cm)** at isolated places over East Uttar Pradesh, Karnataka, Sub-Himalayan West Bengal, Odisha, Jharkhand, Rayalaseema, Marathwada, Nagaland, Meghalaya and Telangana.

For more details of realised weather, kindly refer [Annexure I](#).

i. Weather Systems, Forecast and Warnings (refer to Annexure II & III):

- ❖ The western end of monsoon trough to the north of its normal position at mean sea level and eastern end runs near the foothills of the Himalayas.
- ❖ An upper air cyclonic circulation lay over central parts of Bangladesh in lower & middle tropospheric levels tilting southwestward with height.
- ❖ An **upper air cyclonic circulation** lay over southwest Bay off North Tamil Nadu coasts in lower & middle tropospheric levels.
- ❖ An east-west **trough** runs from Coastal Karnataka to central parts of south Bay of Bengal in lower tropospheric levels.
- ❖ An **upper air cyclonic circulation lay** over northeast Assam & adjoining Arunachal Pradesh in lower tropospheric levels.
- ❖ An **upper air cyclonic circulation lay** over Gangetic West Bengal and adjoining north Odisha in middle tropospheric levels.
- ❖ A **Western Disturbance** as a cyclonic circulation lies over north Punjab & neighbourhood in middle tropospheric levels with trough aloft in middle & upper tropospheric level roughly along Long. 76°E to north of Lat. 32°N.

Under the influence of these systems, the following weather is likely:

Northeast India:

- ❖ **Extremely heavy rainfall (≥ 21 cm)** very likely at isolated places over Arunachal Pradesh on 08th August.
- ❖ Light/moderate rainfall at many places accompanied with thunderstorm, lightning and isolated **heavy rainfall** likely to continue over Arunachal Pradesh, Assam & Meghalaya Nagaland, Manipur, Mizoram & Tripura during 07th-13th August with isolated **very heavy rainfall over Arunachal Pradesh during 07th-12th; Assam & Meghalaya on 07th, 08th, 12th & 13th; Nagaland, Manipur, Mizoram & Tripura on 07th & 08th August.**

Northwest India:

- ❖ Isolated **heavy rainfall** likely over Uttarakhand, Himachal Pradesh during 07th-13th; Haryana on 11th; Uttar Pradesh on 07th, 08th and during 11th-13th; Jammu & Kashmir on 13th August with **very heavy rainfall** over Himachal Pradesh, Uttarakhand during 10th-13th and East Uttar Pradesh on 12th & 13th August.
- ❖ Light/moderate rainfall at many places accompanied with thunderstorm & lightning likely over Western Himalayan region and many/some places over the plains during next 7 days.

South Peninsular India:

- ❖ Isolated **heavy rainfall** likely over Tamil Nadu, Telangana, Rayalaseema during 07th-09th; Kerala & Mahe, Karnataka, Coastal Andhra Pradesh & Yanam on 07th & 08th August with **very heavy rainfall** over Tamil Nadu on 08th August.
- ❖ Strong surface winds (speed reaching 40-50 kmph) very likely over South Peninsular India during next 2 days.
- ❖ Light to moderate rainfall at some places accompanied with thunderstorm & lightning likely over Tamil Nadu, Kerala & Mahe, Lakshadweep, Karnataka, Rayalaseema, Coastal Andhra Pradesh & Yanam and Telangana during next 5 days.

East & Central India:

- ❖ Isolated **heavy rainfall** likely over Sub-Himalayan West Bengal & Sikkim during 07th-13th; Odisha during 07th-09th; Bihar during 07th-09th, 12th & 13th; Gangetic West Bengal, Jharkhand on 07th & 08th; Chhattisgarh during 11th-13th; Andaman & Nicobar Islands on 11th; Vidarbha on 13th August **with isolated very heavy rainfall over Bihar on 08th; Sub-Himalayan West Bengal & Sikkim on 07th & 11th August.**
- ❖ Light to moderate rainfall at most/many places accompanied with thunderstorm & lightning likely over the region during next 5 days.

West India:

- ❖ Isolated **heavy rainfall** likely over Marathwada on 07th & 08th; Konkan & Goa on 07th, 08th, 12th & 13th and Madhya Maharashtra on 07th August.
- ❖ Light to moderate rainfall at many/some places very likely over the region during next 5-6 days.

Fishermen warning:

Fishermen are advised to avoid venturing into the following from 07th August to 12th August 2025 to the following Areas:

Arabian Sea: Few parts of Northwest Arabian Sea adjoining Oman coasts during 08th to 12th August, some parts of southwest and westcentral Arabian Sea; along and off the Somalia coast and adjoining sea areas during 07th to 12th August.

Bay of Bengal: Along and off north Odisha and west Bengal coast adjoining northwest Bay of Bengal on 07th August and over some parts of Gulf of Mannar adjoining Comorin area and over Sri Lanka coasts, few parts of southwest Bay of Bengal during 07th to 12th August.

ii. Weather conditions and forecast over Delhi/NCR during 07th to 10th August, 2025 (Annexure IV)

For more details, kindly refer National Weather Bulletin:

https://mausam.imd.gov.in/responsive/all_india_forecast_bulletin.php

For District wise warnings refer: <https://mausam.imd.gov.in/responsive/districtWiseWarningGIS.php>

For Fishermen warning refer <https://rsmcnewdelhi.imd.gov.in/fishermen-warning.php>

Rainfall recorded (in cm) during past 24 hours till 0830 hours IST of today, the 07th August:

Nagaland, Manipur, Mizoram & Tripura: Lembuchhera (dist West Tripura) 21; Agartala AP (dist West Tripura) 12; Met Agartala AWS (dist West Tripura) 11; Zunheboto (dist Zunheboto) 7;

Assam & Meghalaya: Moranhat (dist Dibrugarh) 18; Chauldhowaghat (dist Lakhimpur) 9; Mawsynram (dist East Khasi Hills), Cherrapunji (dist East Khasi Hills), Dhemaji (dist Dhemaji) 8 Each;

Tamil Nadu, Puducherry & Karaikal: Wallajah (dist Ranipet) 13; Kalavai PWD (dist Ranipet) 10; Vaniyambadi (dist Tirupattur) 9; Kalasapakkam (dist Tiruvannamalai) 8;

Sub Himalayan West Bengal & Sikkim: Damdim Tea Estate (dist Jalpaiguri), Gopalpur Tea Estate (dist Alipurduar) 10 Each; Sankosh (dist Cooch Behar) 8; Murti (dist Jalpaiguri), Dima Tea Estate (dist Alipurduar), Kumargram Tea Estate (dist Alipurduar), Newlands Tea Garden (dist Alipurduar) 7 Each;

Odisha: Harabhanga (dist Boudhgarh) 10; Raighar (dist Nawarangpur) 7;

Royalaseema: Venkatagiri Kota (dist Chittoor) 9;

Himachal Pradesh: Naina Davi (dist Bilaspur) 9; R L Bbmb (dist Bilaspur), Pachhad (dist Sirmaur) 7 Each;

Telangana: Tadwai (dist Kamareddy), Banswada (dist Kamareddy) 7 Each;

North Interior Karnataka: Kuknoor (dist Koppal) 7;

Marathwada: Dharashiv IMD Parttime (dist Dharashiv) 7;

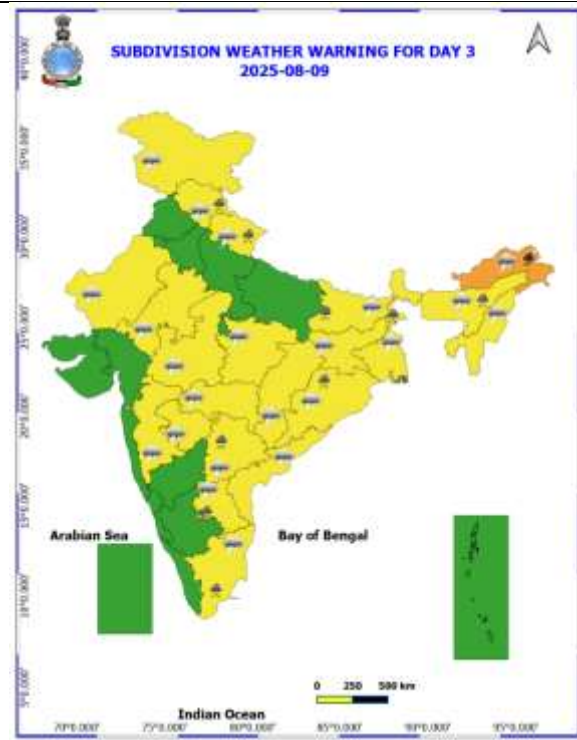
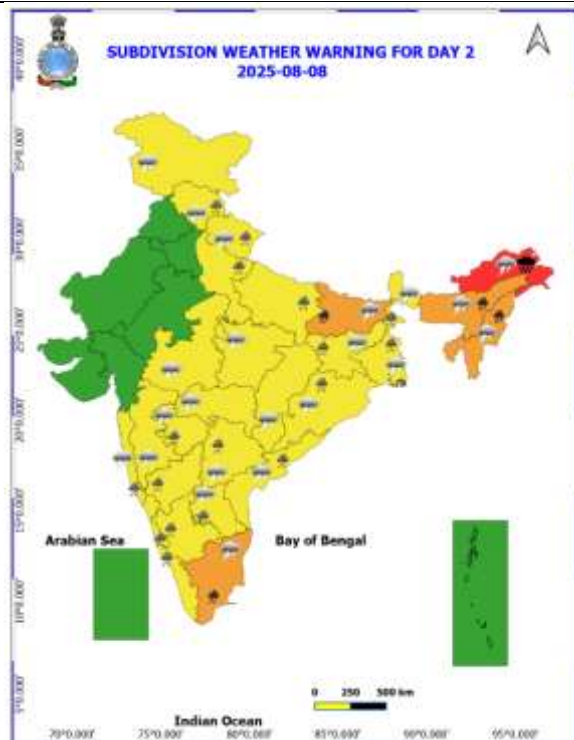
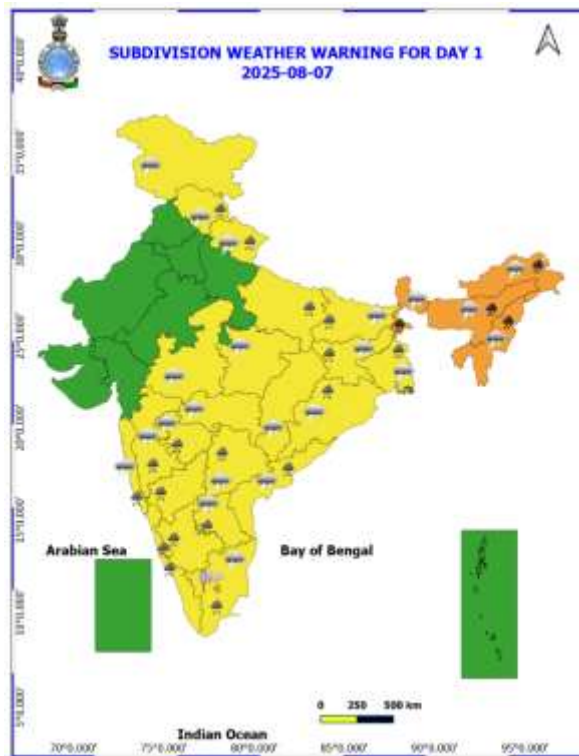
East Uttar Pradesh: Mahsi (dist Bahraich) 7;

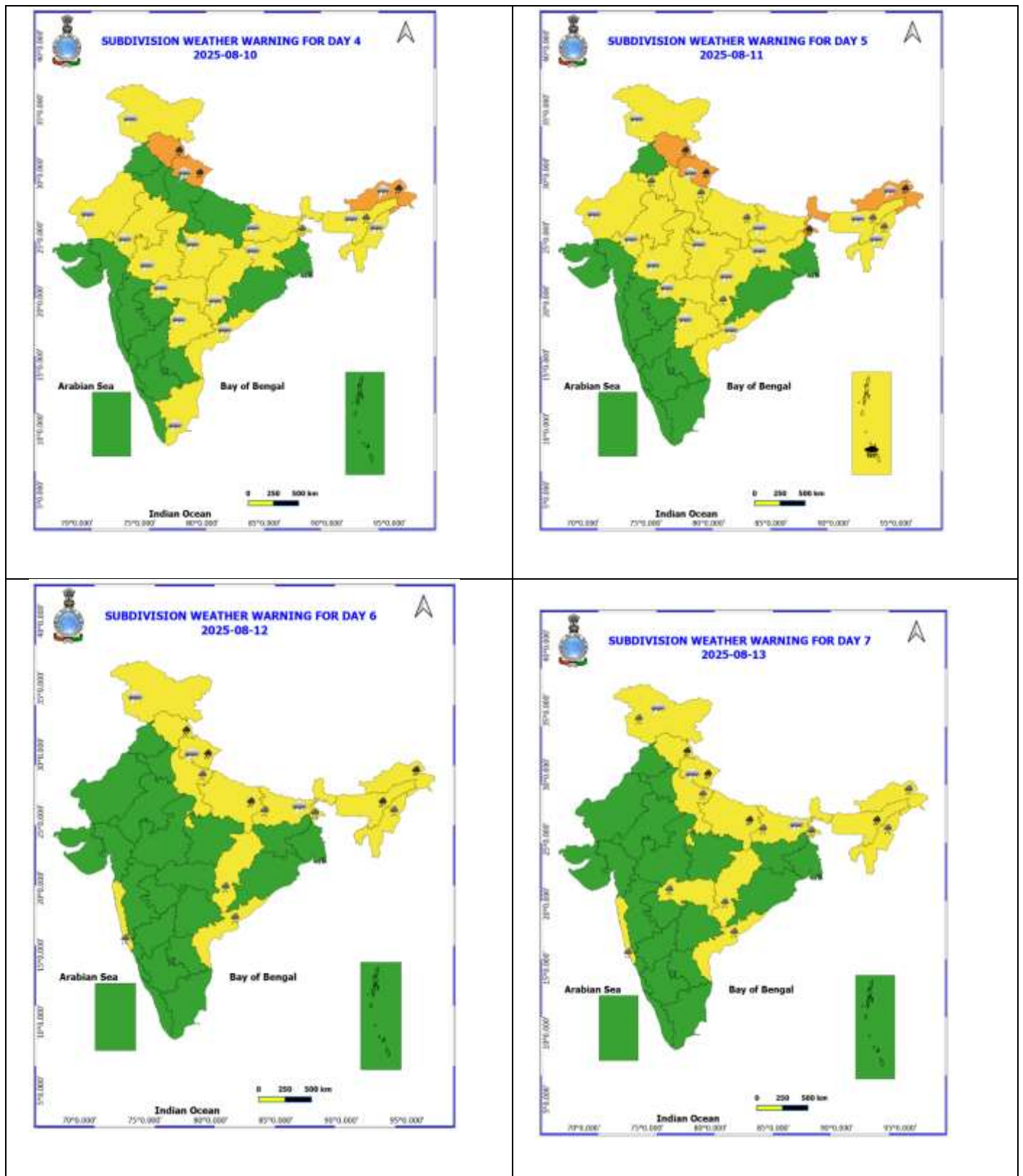
Jharkhand: Kumardungi (dist West Singhum) 7

ANNEXURE II

Table-1								
7 Days Rainfall Forecast								
S.No.	Subdivision	7- Aug	8- Aug	9- Aug	10- Aug	11- Aug	12- Aug	13- Aug
		Day 1	Day 2	Day 3	Day 4	Day 5	Day 6	Day 7
1	ANDAMAN & NICOBAR ISLANDS	FWS	FWS	FWS	FWS	FWS	FWS	FWS
2	ARUNACHAL PRADESH	WS	WS	WS	WS	WS	FWS	FWS
3	ASSAM & MEHGHALAYA	WS	WS	WS	WS	WS	FWS	FWS
4	NAGALAND, MANIPUR, MIZORAM AND TRIPURA	WS	FWS	FWS	FWS	FWS	FWS	FWS
5	SUB HIMALAYAN WEST BENGAL & SIKKIM	WS	WS	WS	WS	WS	WS	WS
6	GANGETIC WEST BENGAL	WS	WS	FWS	SCT	SCT	FWS	FWS
7	ODISHA	FWS	FWS	FWS	SCT	SCT	FWS	FWS
8	JHARKHAND	WS	WS	FWS	FWS	FWS	WS	WS
9	BIHAR	FWS	WS	FWS	SCT	SCT	FWS	FWS
10	EAST UTTAR PRADESH	SCT	FWS	FWS	SCT	FWS	WS	FWS
11	WEST UTTAR PRADESH	SCT	SCT	FWS	SCT	SCT	FWS	FWS
12	UTTARAKHAND	FWS	WS	WS	WS	FWS	FWS	WS
13	HARYANA, CHANDIGARH & DELHI	ISOL	SCT	SCT	SCT	FWS	SCT	SCT
14	PUNJAB	ISOL	ISOL	SCT	SCT	FWS	SCT	SCT
15	HIMACHAL PRADESH	SCT	FWS	FWS	WS	WS	WS	WS
16	JAMMU AND KASHMIR AND LADAKH	SCT	SCT	SCT	SCT	SCT	FWS	FWS
17	WEST RAJASTHAN	DRY	DRY	ISOL	ISOL	ISOL	ISOL	ISOL
18	EAST RAJASTHAN	ISOL	ISOL	SCT	SCT	SCT	ISOL	ISOL
19	WEST MADHYA PRADESH	ISOL	SCT	FWS	FWS	SCT	SCT	SCT
20	EAST MADHYA PRADESH	SCT	FWS	WS	WS	WS	FWS	FWS
21	GUJRAT REGION	SCT	SCT	SCT	SCT	SCT	SCT	SCT
22	SAURASHTRA & KUTCH	SCT	SCT	SCT	SCT	SCT	SCT	SCT
23	KONKAN & GOA	FWS	WS	WS	WS	WS	WS	WS
24	MADHYA MAHARASHTRA	SCT	FWS	SCT	SCT	SCT	SCT	SCT
25	MARATHWADA	FWS	FWS	SCT	SCT	ISOL	SCT	SCT
26	VIDARBHA	SCT	FWS	FWS	FWS	FWS	WS	WS
27	CHHATTISGARH	FWS	WS	FWS	FWS	FWS	WS	WS
28	COASTAL ANDHRA PRADESH	SCT	FWS	SCT	SCT	SCT	SCT	FWS
29	TELANGANA	FWS	FWS	FWS	FWS	FWS	FWS	FWS
30	RAYALASEEMA	FWS	FWS	FWS	SCT	SCT	ISOL	ISOL
31	TAMILNADU & PUDUCHERRY	SCT	SCT	SCT	ISOL	ISOL	ISOL	ISOL
32	COSTAL KARNATAKA	WS	WS	WS	WS	FWS	WS	WS
33	NORTH INTERIOR KARNATAKA	WS	WS	WS	FWS	FWS	WS	WS
34	SOUTH INTERIOR KARNATAKA	WS	WS	WS	FWS	FWS	FWS	WS
35	KERALA AND MAHE	FWS	WS	FWS	FWS	FWS	FWS	WS
36	LAKSHADWEEP	FWS	FWS	FWS	FWS	FWS	FWS	WS

- As the lead period increases forecast accuracy decrease.





- Action may be taken based on ORANGE AND REDCOLOUR warnings.
- Vulnerable regions likely urban and hilly areas action may be initiated for heavy rainfall warning.
- As the lead period increases forecast accuracy decreases.

Detailed districtwise Multi Hazard weather warning for next five days available at <https://mausam.imd.gov.in/responsive/districtWiseWarningGIS.php>

Weather forecast over Delhi/NCR during 07th August to 10th August 2025**Past Weather:**

There has been no large change in minimum and appreciable rise maximum temperatures in past 24 hours over Delhi. The minimum temperatures are in the range of 24-26°C and maximum temperatures were in the range of 34-36°C. The minimum temperatures are near normal and maximum temperatures were near normal over Delhi. South westerly winds prevailed with wind speed upto 22 kmph in past 24 hours over Delhi. No significant rainfall has been recorded during past 24 hrs over Delhi. Partly cloudy sky conditions with a wind speed of upto 10-15 kmph from the southwest direction prevailed over the region in the forenoon today.

Weather Forecast:

07.08.2025: Partly cloudy sky. Possibility of very light rain/ drizzle towards evening/night. The maximum temperatures over Delhi are likely to be in the range of 36 to 38°C. The maximum temperature will be above normal up to 2 to 4 °C. The predominant surface wind will likely to be from the southwest direction with a wind speed of upto 10-15 kmph during the morning and afternoon hours. The wind speed will remain same upto 10-15 kmph from the west direction during evening and night.

08.08.2025: Partly cloudy sky. Possibility of very light to light rain/ thundershowers. The maximum and minimum temperatures over Delhi are likely to be in the range of 36 to 38°C and 24 to 26°C respectively. The minimum temperature will be below normal up to 1 to 3°C and the maximum temperature will be above normal up to 2 to 4°C. The predominant surface wind will likely to be from the northwest direction with a wind speed of upto 10-15 kmph during morning and afternoon hours. The wind speed will decrease upto 05-10 kmph from the south direction during evening and night.

09.08.2025: Partly cloudy sky. Possibility of very light to light rain/thundershowers. The maximum and minimum temperatures over Delhi are likely to be in the range of 32 to 34°C and 24 to 26°C respectively. The minimum temperature will be below normal up to 1 to 3°C and the maximum temperature will be below normal up to 0 to 2°C. The predominant surface wind will likely to be from the southwest direction with a wind speed of upto 05-10 kmph during morning, afternoon, evening and night.

10.08.2025: Partly cloudy sky. Possibility of very light to light rain/thundershowers. The maximum and minimum temperatures over Delhi are likely to be in the range of 33 to 35°C and 23 to 25°C respectively. The minimum temperature will be below normal up to 2 to 4°C and the maximum temperature will be near normal. The predominant surface wind will likely to be from the northeast direction with a wind speed of 05-10 kmph during morning hours. The wind speed will slightly increase upto 10-15 kmph from the northeast direction in the afternoon, evening and night.

Impact & Action Suggested due to

- ❖ **Extremely heavy rainfall (≥ 21 cm)** very likely at isolated places over Arunachal Pradesh on 08th August.
- ❖ Isolated **very heavy rainfall over** Arunachal Pradesh during 07th-12th; Assam & Meghalaya on 07th, 08th, 12th & 13th; Nagaland, Manipur, Mizoram & Tripura on 07th & 08th August. Himachal Pradesh, Uttarakhand during 10th-13th and East Uttar Pradesh on 12th & 13th; Tamil Nadu, Bihar on 08th; Sub-Himalayan West Bengal & Sikkim on 07th & 11th August.

Impact Expected

- Localized Flooding of roads, water logging in low lying areas and closure of underpasses mainly in urban areas of the above region.
- Occasional reduction in visibility due to heavy rainfall.
- Disruption of traffic in major cities due to water logging in roads leading to increased travel time.
- Minor damage to kutcha roads.
- Possibilities of damage to vulnerable structure.
- Localized Landslides/Mudslides/landslips/mudslips/landsinks/mudsinks.
- Damage to horticulture and standing crops in some areas due to inundation.
- It may lead to riverine flooding in some river catchments (for riverine flooding please visit Web page of CWC)

Action Suggested

- Check for traffic congestion on your route before leaving for your destination.
- Follow any traffic advisories that are issued in this regard.
- Avoid going to areas that face the water logging problems often.
- Avoid staying in vulnerable structure.

Agromet advisories for likely impact of Heavy / Heavy to Very Heavy / Extremely Heavy Rainfall

- In **Arunachal Pradesh**, postpone all fresh sowing and transplanting operations till cessation of heavy rains. Harvest nearly mature banana bunches and keep them in a dry and safe place for ripening. Ensure proper drainage in rice, maize, finger millet, soybean and vegetables and fruit orchards to avoid waterlogging. In rice fields, strengthen bunds to prevent field erosion and seedling washout. Provide strong support to fruit-bearing plants to prevent them from bending or breaking during heavy rains.
- In **Assam**, to prevent waterlogging, ensure proper drainage in *Sali* rice, green gram and pigeon pea fields and banana orchards in **Lower Brahmaputra Valley Zone**; *Sali* rice and sugarcane fields in **North Bank Plain Zone** and *Sali* rice fields in **Upper Brahmaputra Valley Zone**
- In **Meghalaya**, ensure proper drainage in rice, maize, turmeric, chilli, okra and bitter gourd fields to prevent waterlogging. Provide staking / support to tall and fragile crops like banana, papaya, bottle gourd etc. to prevent lodging.
- In **Nagaland**, provide proper drainage channels in maize fields to manage surface water runoff. Clean the drainage channels in rice fields to drain out excess water.
- In **Tripura**, maintain proper drainage in rice, chilli and ginger fields.
- In **Uttarakhand**, make necessary arrangements to drain out excess water from the fields of already sown / transplanted rice, sugarcane, maize, black gram, green gram, groundnut, pigeon pea, finger millet, soybean and vegetables in **Bhabar and Tarai Zone**; and barnyard millet, finger millet, green gram and black gram in **Sub Humid Sub Tropic Zone**. In **Hill Zone**, strengthen the bunds to prevent surface runoff of water. Postpone sowing of vegetable pea in case of excessive wet soil conditions. Maintain proper drainage channels in the crop fields.
- In **Himachal Pradesh**, provide proper drainage channels in maize, ginger and vegetable fields in **Mid Hills Sub Humid Zone**.
- In **Sub-Himalayan West Bengal**, make provision to drain out excess water from rice, ginger, vegetable fields and fruit orchards in **Hill Zone** and *aman* paddy and vegetable fields in **Terai Zone**. Cover the chilli seedlings with plastic to protect them from heavy rains in **Terai Zone**.
- In **Bihar**, make provisions to drain out excess water from standing crops such as maize, nurseries of onion, chilli, and cauliflower in **North West Alluvial Plain Zone**; maize, finger millet, ragi, kodo, sava, china etc. in

North East Alluvial Zone; and maize, vegetables, ragi, kodo, sava, in low-lying areas and strengthen field bunds in **South Bihar Alluvial Zone.**

- In **Kerala**, provide adequate drainage in fields of rice, coconut, banana and ginger. Provide support to banana plantations. Make the vegetable pandals stronger.
- In **Tamil Nadu**, ensure proper drainage in the fields of sorghum to prevent waterlogging, especially in heavy soils and low-lying areas. Ensure proper drainage around the coconut plants to avoid root rot.
- In **Karnataka**, ensure proper drainage facilities in arecanut and banana plantations in **Coastal Zone**; fields of maize, cotton, ginger and plantations of arecanut in **Hill Zone**; ginger, maize, finger millet, transplanted rice fields and arecanut and coconut plantations in **Southern Transition Zone.**

Livestock / Fishery

- Keep the animals inside the shed during heavy rainfall and provide them balanced feed.
- Store feed and fodder in a safe place to prevent spoilage.
- Construct an outlet with proper netting around the ponds to drain out excess water, thereby preventing fish from escaping in case of overflow.

Agromet advisories for likely impact of Thunderstorm / Gusty Winds / Squally Winds

- Provide mechanical support to horticultural crops and staking or support to vegetables and young fruit plants / fruit-bearing plants to avoid lodging due to strong winds.

Flash flood guidance:

24 hours Outlook for the Flash Flood Risk (FFR) till 1130 IST of 08-08-2025 :

Low to Moderate flash flood risk likely over few watersheds & neighbourhoods of following Met Sub-divisions during next 24 hours.

Arunachal Pradesh - Changlang, Dibang Valley, Lohit, Lower Dibang Valley and Anjaw districts.

Assam & Meghalaya - Dibrugarh, Jorhat, Sibsagar and Tinsukia districts.

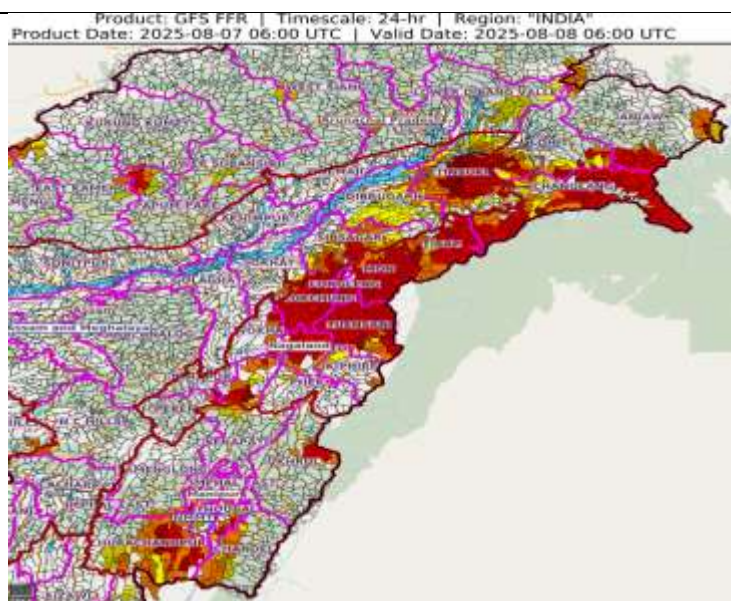
NMMT –

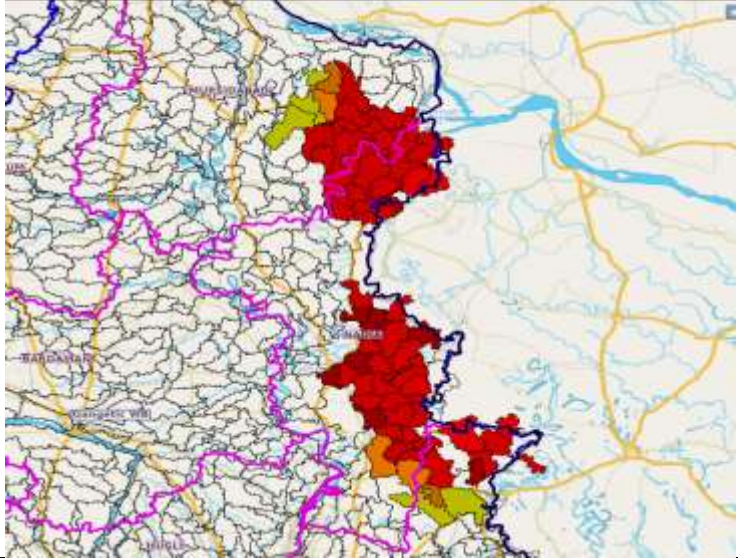
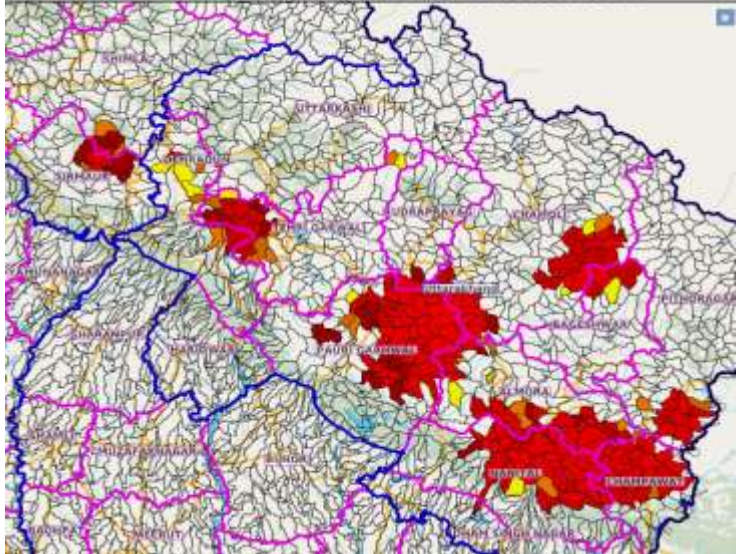
Manipur - Bishnupur, Chandel, Churachandpur, Senapati, Thoubal and Ukhrul districts.

Mizoram – Aizawl and Champhai districts.

Nagaland - Dimapur, Kiphire, Kohima, Longleng, Mokokchung, Mon, Peren, Phek, Tuensang, Wokha and Zunheboto districts.

Surface runoff/ Inundation may occur at some fully saturated soils & low-lying areas over Area of Concern (AoC) as shown in map due to expected rainfall occurrence in next 24 hours.



<p>24 hours Outlook for the Flash Flood Risk (FFR) till 1130 IST of 08-08-2025 :</p> <p>Low to Moderate flash flood risk likely over few watersheds & neighbourhoods of following Met Sub-divisions during next 24 hours.</p> <p>Gangetic West Bengal - Mursidabad, Nadia and North 24 Pragana districts.</p> <p>Surface runoff/ Inundation may occur at some fully saturated soils & low-lying areas over Area of Concern (AoC) as shown in map due to expected rainfall occurrence in next 24 hours.</p>	<p>Product: GFS FFR Timescale: 24-hr Region: "INDIA" Product Date: 2025-08-07 06:00 UTC Valid Date: 2025-08-08 06:00 UTC</p>  <p>This map displays the flash flood risk (FFR) for West Bengal, India, for the period from 06:00 UTC on August 7, 2025, to 06:00 UTC on August 8, 2025. The map shows various districts including Murshidabad, Nadia, and North 24 Parganas. High-risk areas are highlighted in red, while moderate risk areas are in orange. The map also shows major rivers and administrative boundaries.</p>
<p>24 hours Outlook for the Flash Flood Risk (FFR) till 1130 IST of 08-08-2025 :</p> <p>Low to Moderate flash flood risk likely over few watersheds & neighbourhoods of following Met Sub-divisions during next 24 hours.</p> <p>Himachal Pradesh - Shimla and Sirmaur districts.</p> <p>Uttarakhand - Almora, Bageshwar, Chamoli, Champawat, Dehradun, Nanital, Pauri Garhwal, Pithoragarh, Rudraprayag and Tehri Garwal districts.</p> <p>Surface runoff/ Inundation may occur at some fully saturated soils & low-lying areas over Area of Concern (AoC) as shown in map due to expected rainfall occurrence in next 24 hours.</p>	<p>Product: GFS FFR Timescale: 24-hr Region: "INDIA" Product Date: 2025-08-07 06:00 UTC Valid Date: 2025-08-08 06:00 UTC</p>  <p>This map displays the flash flood risk (FFR) for Himachal Pradesh and Uttarakhand, India, for the period from 06:00 UTC on August 7, 2025, to 06:00 UTC on August 8, 2025. The map shows various districts including Shimla, Sirmaur, Almora, Bageshwar, Chamoli, Champawat, Dehradun, Nanital, Pauri Garhwal, Pithoragarh, Rudraprayag, and Tehri Garwal. High-risk areas are highlighted in red, while moderate risk areas are in orange. The map also shows major rivers and administrative boundaries.</p>

Legends & abbreviations:

- ❖ **Heavy Rain:**64.5-115.5mm; **Very Heavy Rain:**115.6-204.4mm; **Extremely Heavy Rain:** >204.4mm.
- ❖ **Obsy:** Observatory; Automatic Weather Station; **ARG:** Automatic Rain Gauge; **dist:** District; **NH:** National Highway; **KVK:** Krishi Vigyan Kendra; **DVC:** Damodar Valley Corporation; **PTO:** Part Time Office, **Aero:** Aerodrome, **IAF:** Indian Air Force.
- ❖ **Region wise classification of meteorological Sub-Divisions:**
 - **Northwest India:** Western Himalayan Region (Jammu-Kashmir-Ladakh-Gilgit-Baltistan-Muzaffarabad, Himachal Pradesh and Uttarakhand); Punjab, Haryana-Chandigarh-Delhi; West Uttar Pradesh, East Uttar Pradesh, West Rajasthan and East Rajasthan.
 - **Central India:** West Madhya Pradesh, East Madhya Pradesh, Vidarbha and Chhattisgarh.
 - **East India:** Bihar, Jharkhand, Sub-Himalayan West Bengal & Sikkim; Gangetic West Bengal, Odisha and Andaman & Nicobar Islands.
 - **Northeast India:** Arunachal Pradesh, Assam & Meghalaya and Nagaland, Manipur, Mizoram & Tripura.
 - **West India:** Gujarat Region, Saurashtra & Kutch, Konkan & Goa, Madhya Maharashtra and Marathawada.
 - **South India:** Coastal Andhra Pradesh & Yanam, Telangana, Rayalaseema, Coastal Karnataka, North Interior Karnataka, South Interior Karnataka, Kerala & Mahe, Tamil Nadu, Puducherry & Karaikal and Lakshadweep.

LEGENDS

1. अंडमान और निकोबार द्वीपसमूह

2. अरुणाचल प्रदेश

3. असम और मेघालय

4. नागालैंड, मणिपुर, मिजोरम और त्रिपुरा

5. उप-हिमालयी पश्चिम बंगाल और सिक्किम

6. गंगीय पश्चिम बंगाल

7. ओडिशा

8. झारखंड

9. बिहार

10. पूर्वी उत्तर प्रदेश

11. पश्चिम उत्तर प्रदेश

12. उत्तराखंड

13. हरियाणा, चंडीगढ़ और दिल्ली

14. पंजाब

15. हिमाचल प्रदेश

16. जम्मू और कश्मीर और लद्दाख

17. पश्चिम राजस्थान

18. पूर्वी राजस्थान

19. पश्चिम मध्य प्रदेश

20. पूर्वी मध्य प्रदेश

21. गुजरात

22. सौराष्ट्र

23. कोंकण और गोवा

24. मध्य महाराष्ट्र

25. मराठवाड़ा

26. विदर्भ

27. छत्तीसगढ़

28. तटीय आंध्र प्रदेश और यनम

29. तेलंगाना

30. रायलसीमा

31. तमिलनाडु, पुडुचेरी और कराईकल

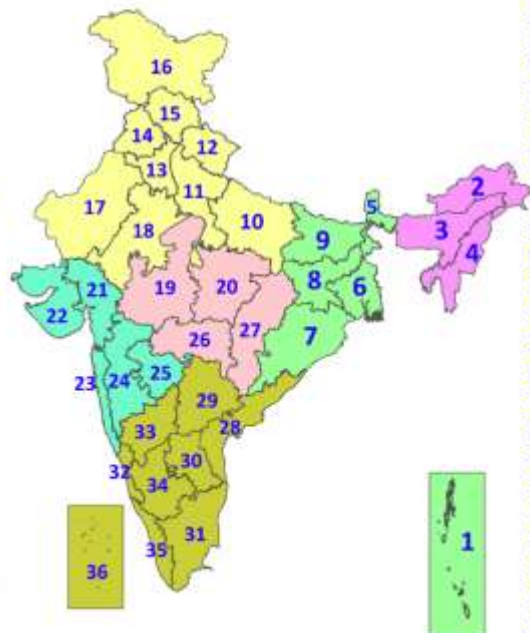
32. तटीय कर्नाटक

33. आंतरिक उत्तरी कर्नाटक

34. आंतरिक दक्षिणी कर्नाटक

35. केरल और माहे

36. लक्षद्वीप



1. Andaman & Nicobar Islands

2. Arunachal Pradesh

3. Assam & Meghalaya

4. Nagaland, Manipur, Mizoram & Tripura

5. Sub-Himalayan West Bengal & Sikkim

6. Gangetic West Bengal

7. Odisha

8. Jharkhand

9. Bihar

10. East Uttar Pradesh

11. West Uttar Pradesh

12. Uttarakhand

13. Haryana, Chandigarh & Delhi

14. Punjab

15. Himachal Pradesh

16. Jammu & Kashmir and Ladakh

17. West Rajasthan

18. East Rajasthan

19. West Madhya Pradesh

20. East Madhya Pradesh

21. Gujarat

22. Saurashtra

23. Konkan & Goa

24. Madhya Maharashtra

25. Marathwada

26. Vidarbha

27. Chhattisgarh

28. Coastal Andhra Pradesh & Yanam

29. Telangana

30. Rayalaseema

31. Tamilnadu, Puducherry & Karaikal

32. Coastal Karnataka

33. North Interior Karnataka

34. South Interior Karnataka

35. Kerala & Mahe

36. Lakshadweep

SPATIAL DISTRIBUTION (% of Stations reporting)

% Stations	Category	% Stations	Category
76-100	Widespread (WS/Most Places)	26-50	Scattered (SCT/A Few Places)
51-75	Fairly Widespread (FWS/Many Places)	1-25	Isolated (ISOL)



Fog



Heavy Rain



Very Heavy Rain



Extremely Heavy Rain



Thunder & Lightning



Hailstorm



Dust Raising Winds



Heavy Snow



Dust Storm



Heat Wave



Warm Night



Hot Day



Hot & Humid



Strong Surface Winds



Cold Wave



Cold Day



Ground Frost

COLOUR CODED WARNING

No Warning (No Action)

Watch (Be Aware)

Alert (Be Prepared To Take Action)

Warning (Take Action)

Probabilistic Forecast

Terms	Probability of Occurrence (%)
Unlikely	< 25
Likely	25 - 50
Very Likely	50 - 75
Most Likely	> 75

* Red colour warning does not mean "Red Alert", Red colour warning means "Take Action".

Forecast and Warning for any day is valid from 0830 hours IST of day till 0830 hours IST of next day.

For more details, kindly visit <https://mausam.imd.gov.in> or contact: 011-2434-4599

(Service to the Nation since 1875)

DEFINITION/CRITERIA

Rain/ Snow *

Heavy: 64.5 to 115.5 mm/cm *
Very Heavy: 115.6 to 204.4 mm/cm *
Extremely Heavy: > 204.4 mm/cm *

Heat Wave

When maximum temperature of a station reaches $\geq 40^{\circ}\text{C}$ for plains and $\geq 30^{\circ}\text{C}$ for hilly regions

(a) Based on Departure from normal

Heat Wave: Maximum Temperature Departure from normal 4.5°C to 6.4°C .

Severe Heat Wave: Maximum Temperature Departure from normal $\geq 6.5^{\circ}\text{C}$

(b). Based on Actual maximum temperature

Heat Wave: When actual maximum temperature $\geq 45^{\circ}\text{C}$.

Severe Heat Wave: When actual maximum temperature $\geq 47^{\circ}\text{C}$.

(c). Criteria for heat wave for coastal stations

When maximum temperature departure is $> 4.5^{\circ}\text{C}$ from normal. Heat Wave may be described provided maximum temperature $\geq 37^{\circ}\text{C}$.

Warm Night

When maximum temperature remains 40°C

Warm Night: When minimum temperature departure 4.5°C to 6.4°C .

Severe Warm Night: When minimum temperature departure $> 6.4^{\circ}\text{C}$.

Cold Wave

When minimum temperature of a station $\leq 10^{\circ}\text{C}$ for plains and $\leq 0^{\circ}\text{C}$ for hilly regions.

(a). Based on departure

Cold Wave: Minimum Temperature Departure from normal -4.5°C to -6.4°C .

Severe Cold Wave: Minimum Temperature Departure from normal $\leq -6.5^{\circ}\text{C}$

(b) Based on actual Minimum Temperature (for Plains only)

Cold Wave: When Minimum Temperature is $\leq 4.0^{\circ}\text{C}$

Severe Cold Wave: When Minimum Temperature is $\leq 2.0^{\circ}\text{C}$

(c) For Coastal Stations

When Minimum Temperature departure is $\leq -4.5^{\circ}\text{C}$ & actual Minimum Temperature is $\leq 15^{\circ}\text{C}$

Cold Day

When minimum temperature of a station $\leq 10^{\circ}\text{C}$ for plains and $\leq 0^{\circ}\text{C}$ for hilly regions

Based on departure

Cold Day: Maximum Temperature Departure from normal -4.5°C to -6.4°C .

Severe Cold Day: Maximum Temperature Departure from normal $\leq -6.5^{\circ}\text{C}$

Fog

Phenomenon of small droplets suspended in air and the horizontal visibility $< 1\text{km}$

Moderate Fog: When the visibility between 500-200 metres

Dense Fog: when the visibility between 50- 200 metres

Very Dense Fog: when the visibility < 50 metres

Thunderstorm

Sudden electrical discharges manifested by a flash of light (Lightning) and a sharp rumbling sound (thunder)

Dust/Sand Storm

An ensemble of particles of dust or sand energetically lifted to great heights by a strong and turbulent wind.

Frost

Ice deposits on ground

Air temperature $\leq 4^{\circ}\text{C}$ (over Plains)

Squall

A strong wind that rises suddenly, lasts for atleast 1 minute.

Moderate: Wind speed 52-61 kmph

Severe: Wind speed 62-67 kmph

Very Severe: Wind speed > 67 kmph

Sea State

Effect of various waves in the sea over specific area

Rough to very rough: Wind speed 41-62 kmph (22-33 knots) & Wave height 2.5-6 metre

High to very high: Wind speed 63-117 kmph (34-63 knots) & Wave height 6-14 metre

Phenomenal: Wind speed > 117 kmph (> 63 knots) & Wave height > 14 metre

Cyclone

Cyclonic Storm: Wind speed 62-87 kmph (34-47 knots)

Severe Cyclonic Storm: Wind speed 88-117 kmph (48-63 knots)

Very Severe Cyclonic Storm: Wind speed 118-165 kmph (64 - 89 knots)

Extremely Severe Cyclonic Storm: Wind speed 166-220 kmph (90 -119 knots)

Super Cyclone Storm: Wind speed > 220 kmph (> 119 knots)

* Red colour warning does not mean "Red Alert", Red colour warning means "Take Action".

Forecast and Warning for any day is valid from 0830 hours IST of day till 0830 hours IST of next day.

For more details, kindly visit <https://mausam.imd.gov.in> or contact: 011-2434-4599

(Service to the Nation since 1875)

Hot and Humid: When maximum temperatures remain 3°C above normal along with the above normal relative humidity.